




**Unitarian Universalist Church of Las Cruces**  
2000 South Solano Drive, El Paso, Texas 88001

**Part I** Facilities Condition Assessment for Priority Level 1 Findings

STRUCTURAL | 

**NARRATIVES**

**Building 1 Sanctuary | Gallery**

**Finding B1.1 Exterior Walls** – Deficiencies were not present at the time of our observations that will point to issues with the structure affecting the safety and welfare of occupants.

**Solution B1.1** None required.

**Finding B1.2 Roof Structure** - Deficiencies were not observed at the roof beams, ceilings and roofing materials indicating issues with the structure that will affect the safety of occupants.

**Solution B1.2** None required.

**Finding B1.3 Floors & Foundation** - Deficiencies were not observed at the time of our observations that will point to issues with the structure. Building foundations appear to be working as intended.

**Solution B1.3** None required.

**Building 2 Religious Education**

**Finding B2.1 Exterior Walls** – Deficiencies were not present at the time of our observations that will point to issues with the structure affecting the safety and welfare of occupants.

**Solution B2.1** None required.

**Finding B2.2 Roof Structure** - Deficiencies were not observed at the roof beams, ceilings and roofing materials indicating issues with the structure that will affect the safety of occupants.

**Solution B2.2** None required.

**Finding B2.3 Floors & Foundation** - Deficiencies were not observed at the time of our observations that will point to issues with the structure. Building foundations appear to be working as intended.

**Solution B2.3** None required.

**Building 3 Library | Admin**

**Finding B3.1 Exterior Walls** – Deficiencies were not present at the time of our observations that will point to issues with the structure affecting the safety and welfare of occupants.

**Solution B3.1** None required.

**Finding B3.2 Roof Structure** - Deficiencies were not observed at the roof beams, ceilings and roofing materials indicating issues with the structure that will affect the safety of occupants.

**Solution B3.2** None required.

**Finding B3.3 Floors & Foundation** - Deficiencies were not observed at the time of our observations that will point to issues with the structure. Building foundations appear to be working as intended.

**Solution B3.3** None required.



**Unitarian Universalist Church of Las Cruces**  
 2000 South Solano Drive, El Paso, Texas 88001

Part I Facilities Condition Assessment

STRUCTURAL |



REFERENCE PHOTOS | Building 1 Sanctuary | Gallery

Photo 1



Photo 2



Photo 3



Photo 4



Photo 5



Photo 6



Photo 7



Photo 8





**Unitarian Universalist Church of Las Cruces**  
2000 South Solano Drive, El Paso, Texas 88001

Part I Facilities Condition Assessment

STRUCTURAL |



REFERENCE PHOTOS | Building 2 Religious Education

Photo 1



Photo 2



Photo 3



Photo 4



Photo 5

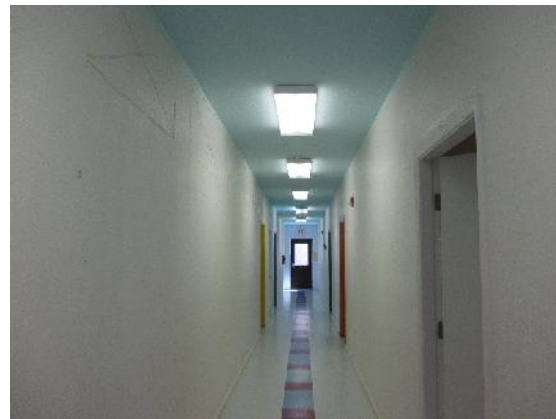


Photo 6



Photo 7



Photo 8





**Unitarian Universalist Church of Las Cruces**  
2000 South Solano Drive, El Paso, Texas 88001

Part I Facilities Condition Assessment

STRUCTURAL |



REFERENCE PHOTOS | Building 3 Library | Admin

Photo 1



Photo 2



Photo 3



Photo 4



Photo 5



Photo 6



Photo 7



Photo 8

