

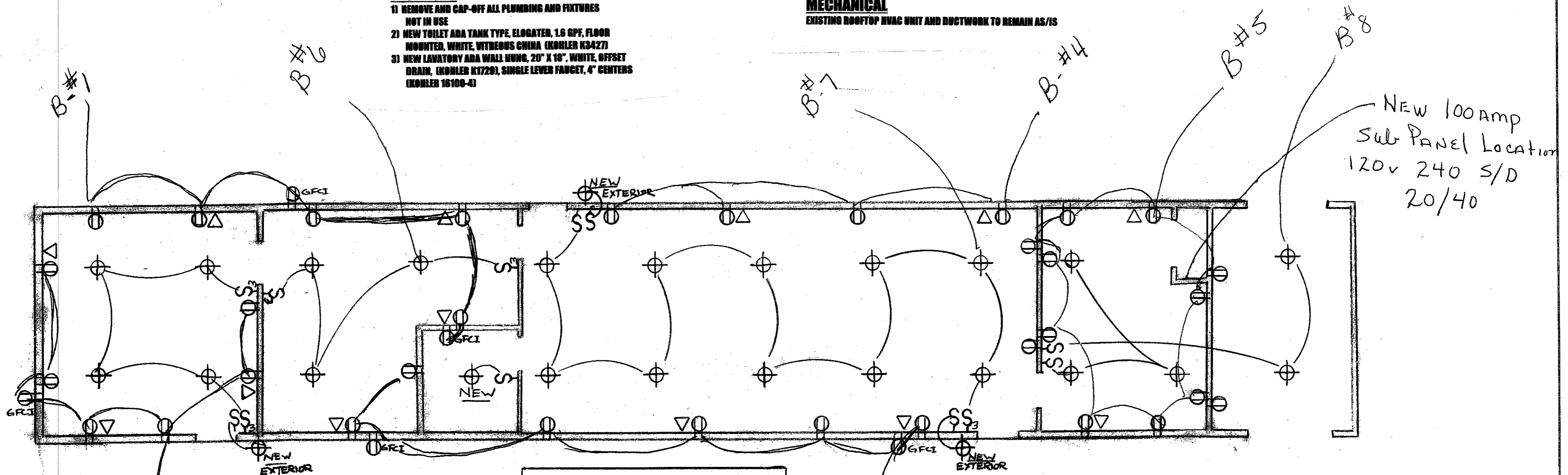
**PLUMBING AND MECHANICAL**

**PLUMBING**

- 1) REMOVE AND CAP-OFF ALL PLUMBING AND FIXTURES NOT IN USE
- 2) NEW TOILET ADA TANK TYPE, ELOGATED, 1.6 GPF, FLOOR MOUNTED, WHITE, VITREOUS CHINA (KOHLER K3427)
- 3) NEW LAVATORY ADA WALL MUNG, 20" X 16", WHITE, OFFSET DRAIN, (KOHLER K1720), SINGLE LEVER FANCIET, 4" CENTERS (KOHLER 16100-4)

**MECHANICAL**

EXISTING ROOFTOP HVAC UNIT AND DUCTWORK TO REMAIN AS/IS



**ELECTRICAL**  
CONTINUED ON PAGE 4 of 4

**ELECTRICAL**

- 1) REMOVE ALL CONDUIT/WIRING AND TELEPHONE WIRING NOT IN USE
- 2) ALL CEILING FIXTURES TO REMAIN AS EXISTING EXCEPT AS NOTED "NEW"
- 3) ALL POWER AND DATA OUTLETS, CONDUIT AND WIRING TO BE NEW
- 4) ALL POWER AND LIGHTING CIRCUITS TO BE SERVED BY NEW 100 AMP SUB-PANEL

- ⊕ DUPLEX RECEPTACLE
- △ DATA OUTLET
- ⊙ LIGHT FIXTURE

<b>REMODEL OF OLD RE (SOUTH) WING UNITARIAN UNIVERSALIST CHURCH OF LAS CRUCES</b>	
SCALE: 3/16" = 1'-0"	APPROVED BY:
DATE: 7/20/05	REVISION:
<b>2000 S. SOLANO</b>	
<b>PLUMBING, MECHANICAL AND ELECTRICAL</b>	DRAWING NUMBER <b>3 of 4</b>