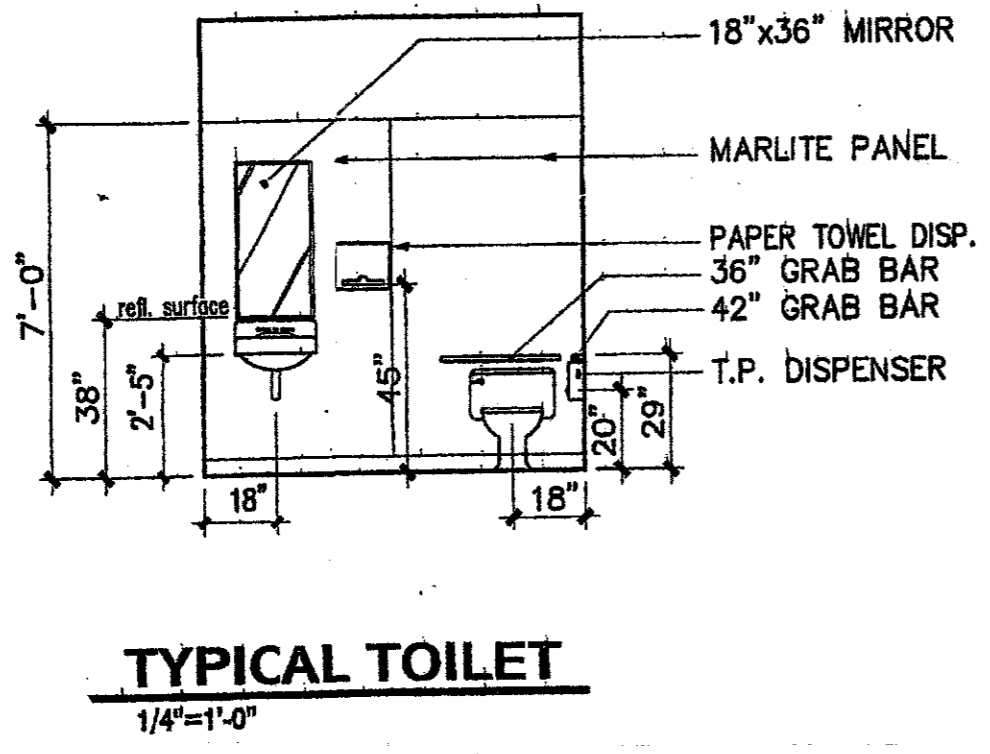
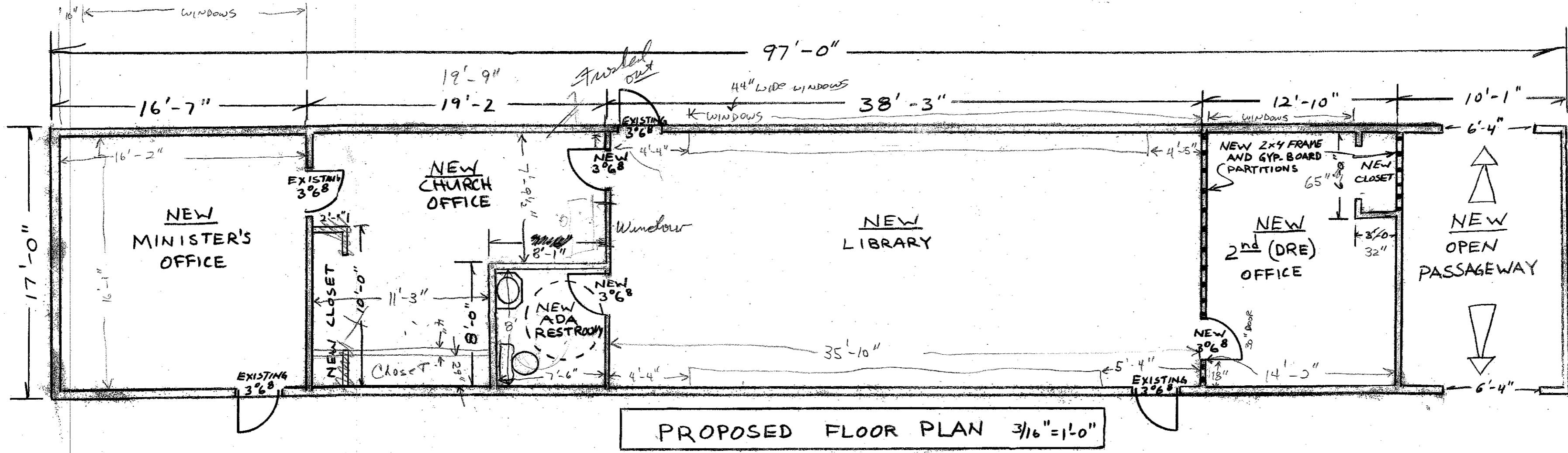
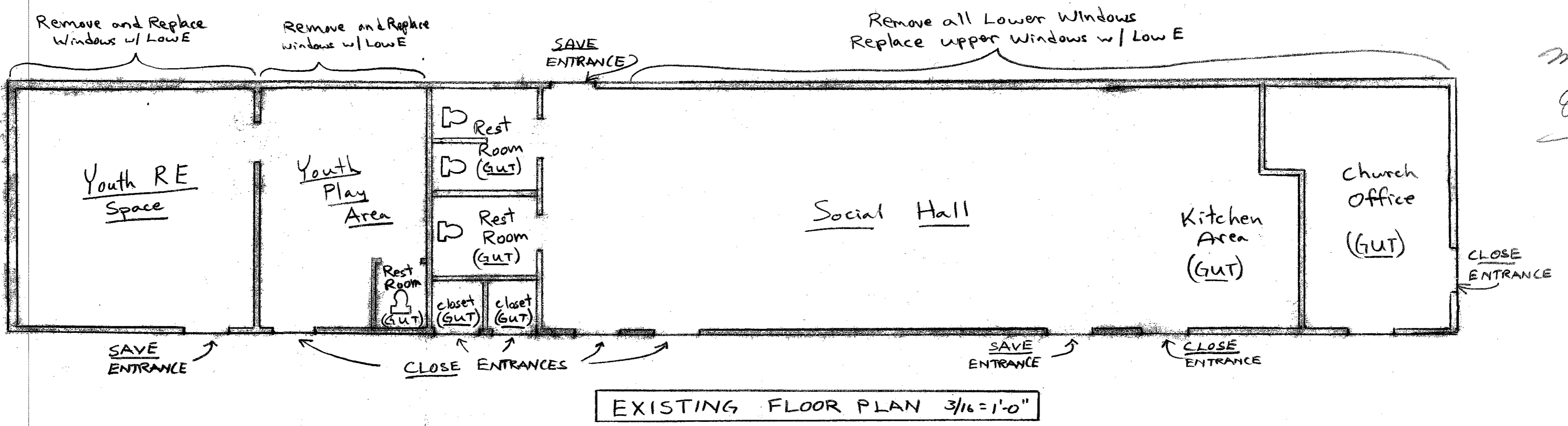


Cell
993-
0055
Mike
Electrician



- GENERAL SCOPE OF WORK**
- 1) CONVERT YOUTH RE SPACE TO MINISTERS OFFICE
 - 2) CONVERT YOUTH PLAY AREA TO CHURCH OFFICE
 - 3) CONVERT MULTIPLE RESTROOMS TO SINGLE ADA RESTROOM
 - 4) CONVERT SOCIAL HALL TO LIBRARY
 - 5) CONVERT KITCHEN TO 2ND OFFICE (DRE)
 - 6) CONVERT CHURCH OFFICE TO OPEN EAST/WEST PASSAGEWAY
 - 7) REMOVE SEVERAL DOORS, RETAINING ONLY THOSE THAT PERTAIN TO NEW FLOOR PLAN
 - 8) REMOVE ALL WEST WALL WINDOWS, REPLACE WITH LOW-E ALONG UPPER ROW AND IN OFFICES

REMODEL OF OLD RE (SOUTH) WING UNITARIAN UNIVERSALIST CHURCH OF LAS CRUCES			
SCALE: 3/16"=1'-0"	APPROVED BY:	DRAWN BY:	REVISED:
DATE: 9/20/05			
2000 S. SOLANO			
FLOOR PLANS			
			DRAWING NUMBER 2 of 4