

SOLANO DRIVE

PROJECT DATA

OCCUPANCY: B
CONSTRUCTION TYPE: VB

AREA: 1,649 SF

OCCUPANCY LOAD
LIBRARY: 650 SF @ 50 SF/OCC
OFFICE: 829 SF @ 100 SF/OCC
OPEN BREEZEWAY: 170 SF

13 OCCUPANTS
9 OCCUPANTS
0 OCCUPANTS

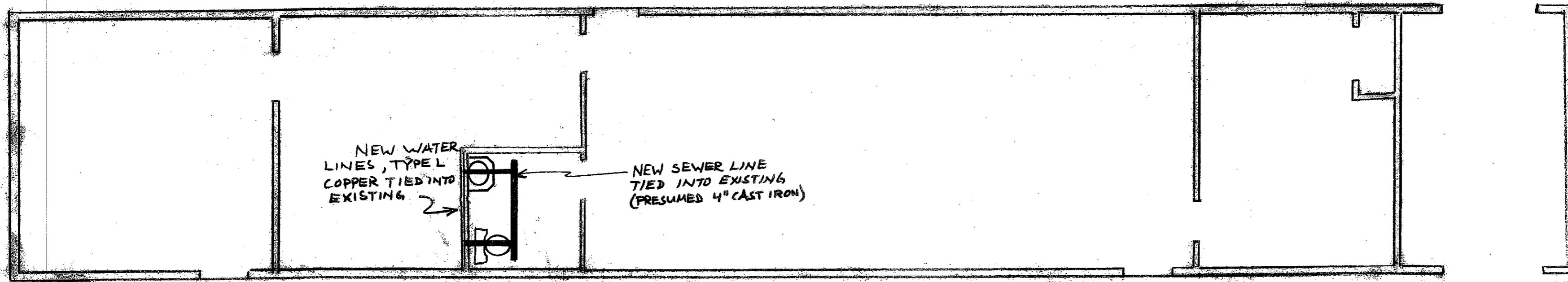
TOTAL

22 OCCUPANTS

SITE PLAN



REMODEL OF OLD RE (SOUTH) WING UNITARIAN UNIVERSALIST CHURCH OF LAS CRUCES		
SCALE: 3/16" = 1'-0"	APPROVED BY:	DRAWN BY:
DATE: 9/20/05		REVISED:
2000 S. SOLANO		
SITE PLAN		DRAWING NUMBER 1 of 4



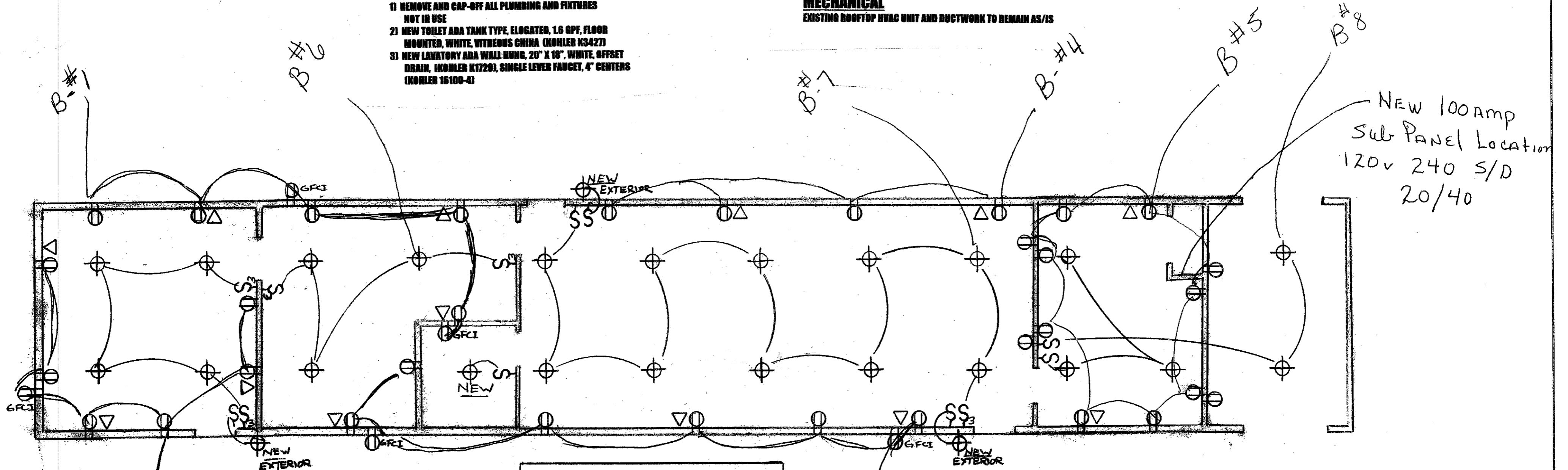
PLUMBING AND MECHANICAL

PLUMBING

- 1) REMOVE AND CAP-OFF ALL PLUMBING AND FIXTURES NOT IN USE
- 2) NEW TOILET ADA TANK TYPE, ELOGATED, 1.6 GPF, FLOOR MOUNTED, WHITE, VITREOUS CHINA (KOHLER K3427)
- 3) NEW LAVATORY ADA WALL MUNG, 20" X 16", WHITE, OFFSET DRAIN, (KOHLER K1720), SINGLE LEVER FANCIET, 4" CENTERS (KOHLER 16100-4)

MECHANICAL

EXISTING ROOFTOP HVAC UNIT AND DUCTWORK TO REMAIN AS/IS



ELECTRICAL
CONTINUED ON PAGE 4 of 4

ELECTRICAL

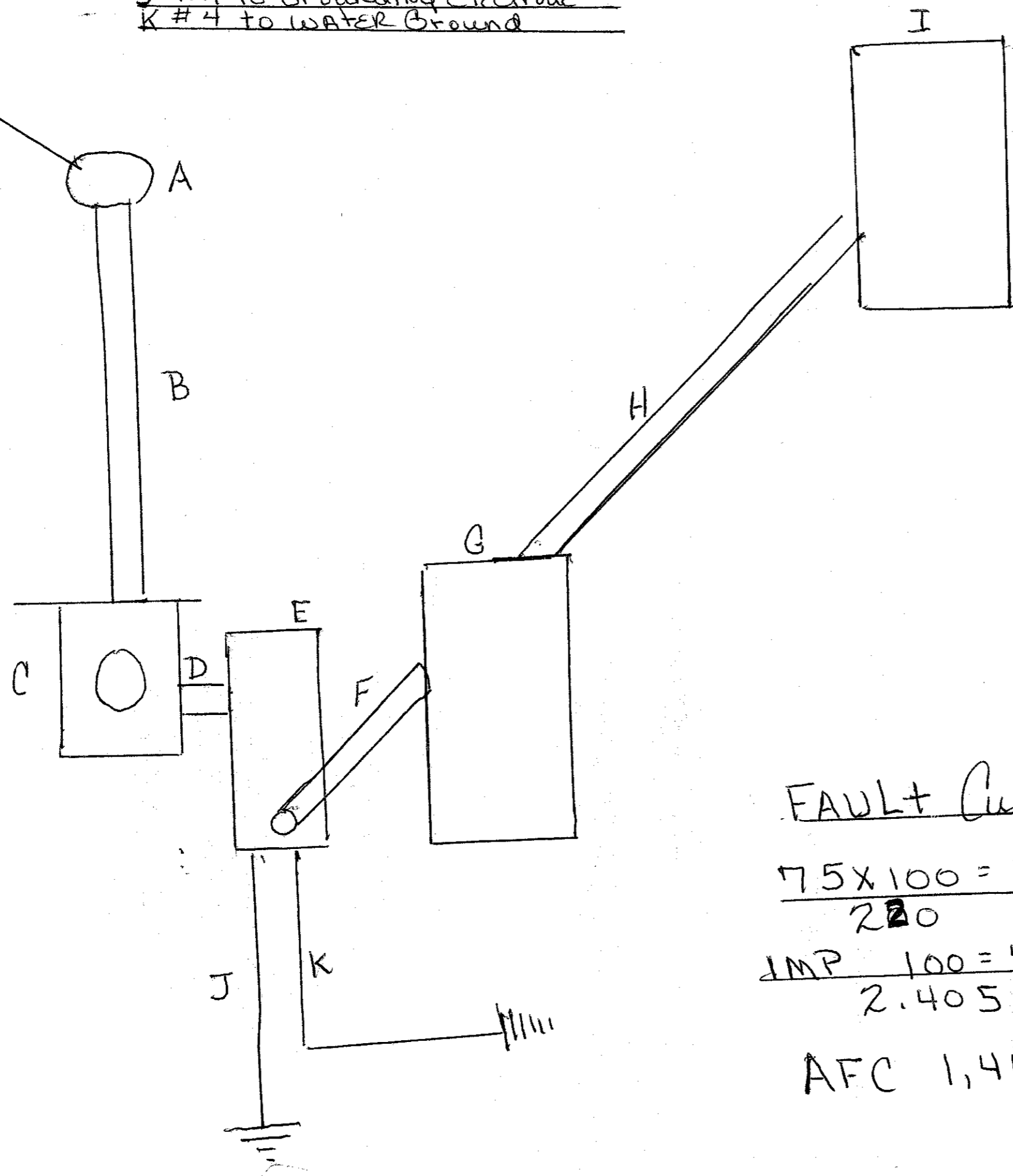
- 1) REMOVE ALL CONDUIT/WIRING AND TELEPHONE WIRING NOT IN USE
- 2) ALL CEILING FIXTURES TO REMAIN AS EXISTING EXCEPT AS NOTED "NEW"
- 3) ALL POWER AND DATA OUTLETS, CONDUIT AND WIRING TO BE NEW
- 4) ALL POWER AND LIGHTING CIRCUITS TO BE SERVED BY NEW 100 AMP SUB-PANEL

- ⊕ DUPLEX RECEPTACLE
- △ DATA OUTLET
- ⊙ LIGHT FIXTURE

REMODEL OF OLD RE (SOUTH) WING UNITARIAN UNIVERSALIST CHURCH OF LAS CRUCES		DRAWN BY
SCALE: 3/16" = 1'-0"	APPROVED BY:	REVISED
DATE: 7/20/05		
2000 S. SOLANO		
PLUMBING, MECHANICAL AND ELECTRICAL	DRAWING NUMBER	
	3 of 4	

El Paso's
Pole Mounted
Transformer

- A 3 inch WEATHER HEAD
- B 3 inch Rigid Conduit with 3-4Ø
- C 200AMP Single Phase METER CAN
- D 2 inch Rigid Nipple with 3-3Ø #1-#4
- E Raintight 200AMP MAIN Switch
- F 2 inch Rigid Nipple with 3-3Ø #1-#4
- G S/D 200amp IN DOOR MAIN Lug Panel 40 SPACE
- H 1/2 EMT with 3-#2 & 1-#6
- I IN DOOR 100AMP MAIN Lug Panel S/D 32 SPACE
- J #4 to Grounding Electrode
- K #4 to WATER Ground



Sub PANEL B

PANEL	SCHEDULE
2 GEN REC	GEN REC 1
4 GEN REC	GEN REC 3
6 LIGHTING	GEN REC 5
8 LIGHTING	LIGHTING 7
10	9
12	11

~~SPARE~~

MAIN

FAULT CURRENT

$$\frac{75 \times 100 = 34}{220}$$

$$\frac{1MP \quad 100 = 41.58}{2.405}$$

AFC 1,414 Amps

LOAD Calculations

Lighting	2200
RECEPTILES	4500
AC	1800
WATER HEATER	3500

F.L.C 13,500
FLA 61.5 Amps

(Note)
Receptiles 18" AFF
Switches 48" to Top AFF

**REMODEL OF OLD RE (SOUTH) WING
UNITARIAN UNIVERSALIST CHURCH OF LAS CRUCES**

SCALE: 3/16" = 1'-0" APPROVED BY: _____ DRAWN BY: _____
DATE: 9/20/05 REVISED: _____

2000 S. SOLANO

ELECTRICAL (CONTINUED) DRAWING NUMBER 4 of 4