

# Part 2 Programming

## INTRODUCTION

As part MNK's scope of work, we were asked to analyze the UUCLC's existing use of facilities, developing buildings' Existing Programming, and also to draft the Prioritized Proposed Programming.

In the Existing Programming section of the report, you can find the floor plans of the existing buildings, room designations based on their current functions, and square footage information.

In developing the Prioritized Proposed Programming, MNK first carefully read all the information it had been provided, from the Appreciative Inquiry, the Expression of Interest, and both surveys that were conducted by the UUCLC over the summer of 2015. Based on this information, we gleaned a list of spaces that we believed the UUCLC desired to see in the Site Master Plan, and created Space Groups. Though originally five Space Groups, after Community Input Meeting 2, six Space Groups were finalized. In order from highest to lowest priority they are: Fellowship (Kitchen and Dining Hall), Worship (Sanctuary), Adult R.E. (Later referred to as the Conference Center), Children | Youth R.E., Gallery, and Administrative. The prioritization of the Space Groups was the result of the congregation's participative decision making process that we conducted during Community Input Meeting 2.

Within each of the groups, individual rooms | room names were listed. As part of the congregation's participative decision making process that also took place during Community Input Meeting 2, members of the congregation were asked how important, or if a particular room was needed and should be included in the square footage calculations that we used to develop the building footprints included in the Site Master Plan. As you can see in the Prioritized Proposed Programming section of the report, there are certain spaces listed and crossed out in red. These rooms, originally thought to be desired by the congregation. After the congregation had the opportunity to collectively analyze and refine the list of building spaces, they were not considered strong enough contributors to the project goals to be included in the final square footage calculations.

The final Prioritized Proposed Programming document you find in this report, reflects the preliminary square footage calculations we used to develop the building footprints for the Site Master Plan. The square footage shown is a representative, approximate number, and will vary, as Construction Documents for each phase are developed, and needs are continuously re-assessed by the congregation.



## PRIORITIZED PROPOSED PROGRAMMING TABLE

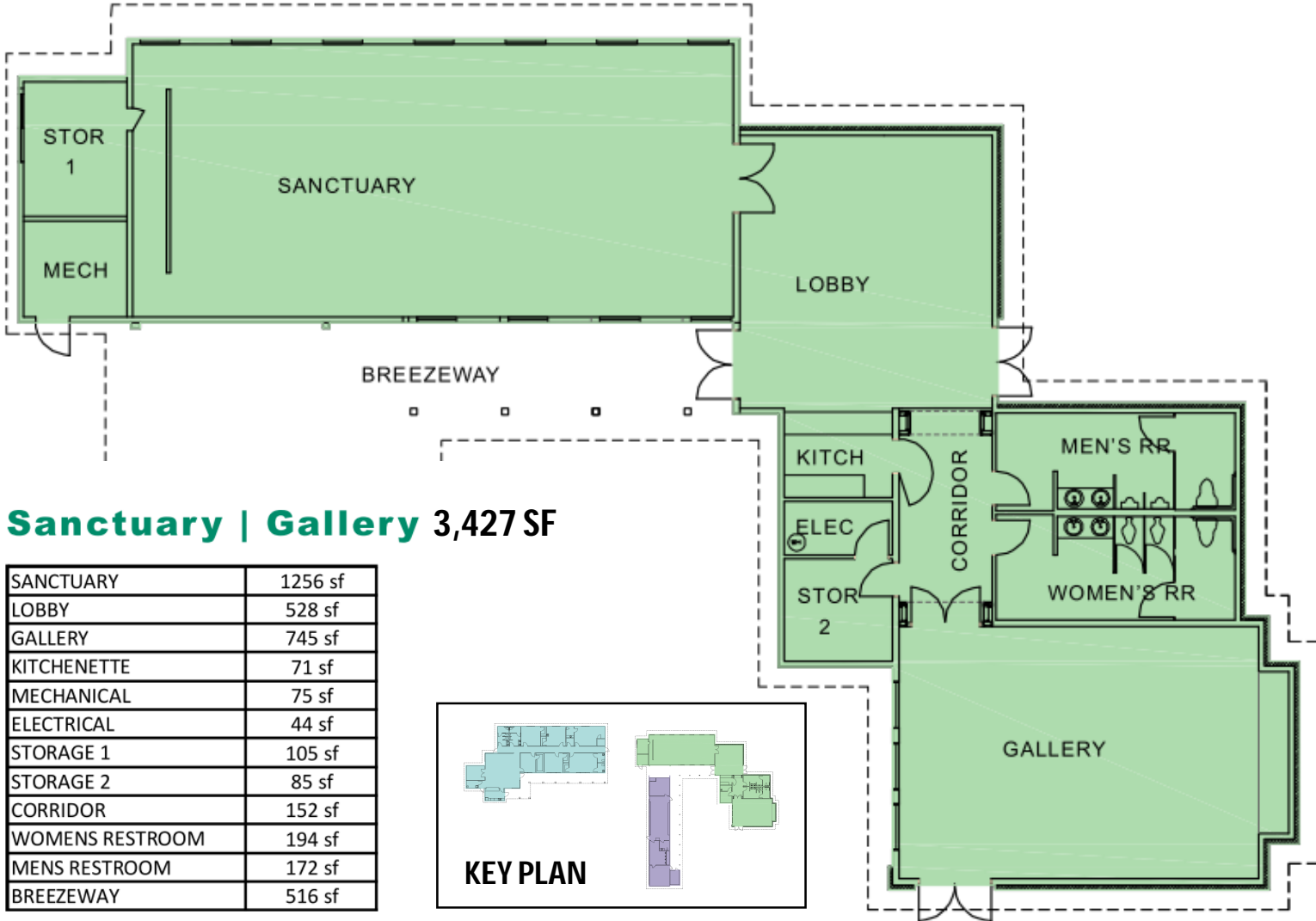
FELLOWSHIP   1st PRIORITY	Existing SF	Proposed SF
Family Restroom	0	In Gallery
<del>Lobby</del>	0	<del>150</del>
<del>Coat Check Closet   Ticket Booth</del>	0	<del>150</del>
Fellowship   Feast Hall   Occupants 400 - Dividable	749   Great Room ( Also Listed In Adult R.E.)	6,000
Commercial Kitchen	147   Kitchen ( Also Listed In Adult R.E.)	1,355
Storage - Food Service Equipment	168   Storage 4 ( Also Listed In Adult R.E.)	Included in Kitchen
Storage - Pantry	92   Storage 5 ( Also Listed In Adult R.E.)	Included in Kitchen
<del>Storage - Tables and Chairs</del>	0	<del>200</del>
Storage - AV Equipment Library	0	Store in Adult RE
<del>Storage - Auction + Sale Intake   Sorting   Storage Area</del>	0	<del>500</del>
Car   Truck   Van Access Catering   Loading Dock	0	0
<del>Child Care Area</del>	0	<del>900</del>
<del>Lounge</del>	0	<del>600</del>
Circulation   5 %	0	493
		7,848
WORSHIP   2nd PRIORITY	Existing SF	Proposed SF
<del>Coat Check Closet</del>	0	<del>150</del>
Lobby   Social Hall(s)	528   Lobby	965
Lobby   Social Hall Food   Coffee Area	71   Kitchenette	Included Above
<del>Book Store   Gift Shop</del>	0	<del>500</del>
Sanctuary	1256   Sanctuary	2,800
Withdrawing Room	0	95
<del>Storage   Sanctuary's Extra Seating</del>	0	<del>150</del>
Sanctuary Pulpit Space	0	Included in Sanctuary
Sanctuary Performance Space	0	Included in Sanctuary
Sound Booth   A   V Equipment	0	120
Sunday Service Preparation Space   Vestry	0	200
<del>Storage   Service Preparation Items</del>	105   Storage 1	<del>120</del>
<del>Bride's Room</del>	0	<del>120</del>

Chapel   Meditation	0	375
Choir   Music Rehearsal Room + Storage	0	600
Restroom	366   Men's + Women's RR	600
Electrical Closet	44   Electrical	50
Data Closet	0	
Custodial Closet	0	50
Storage   Custodial - Existing	85   Storage 2	80
Mechanical Closet - Existing	75   Mechanical	75
Circulation   5%	152   Corridor	353
		6,363
<b>ADULT R.E.   CONFERENCE CENTER   3rd PRIORITY</b>	<b>Existing SF</b>	<b>Proposed SF</b>
Roundtable + Concert Hall   75 Participants   Qty 1	0	1,300
Adult Education   Meeting Spaces   20 - 30 Participants   6 - 600 SF	0	2,550
Storage   AV Equipment Library	0	Included in Library
<del>Storage - Tables and Chairs (75)</del>	0	<del>150</del>
Library	576   Library	Included in Roundtable
Small Kitchen + Coffee Shop	0	100
<del>Art Display</del>	0	<del>200</del>
Copy   Workroom	0	Included in Admin
Storage   Adult Education Programs 15 SF x 30   60 Programs	0	Included In Meeting Spaces
Restrooms	0	300
Electrical Closet	0	Included in Admin
Data Closet	0	
Custodial Closet	0	
<del>Kiva</del>	0	<del>600</del>
Circulation   15 %	0	780
		5,030
<b>CHILDREN   YOUTH R.E.   4th PRIORITY</b>		
Religious Education Great Room - Existing	749   Great Room ( Listed Twice )	749
Kitchen	147   Kitchen ( Also Listed In Fellowship)	147
Storage - Food Service Equipment - Existing	168   Storage 4 ( Also Listed In Fellowship)	168
Storage - Pantry - Existing	92   Storage 5 ( Also Listed In Fellowship)	92
<del>Storage - Tables and Chairs</del>	0	<del>200</del>
Religious Education Classrooms   Existing - 5 Existing	1394   Classrooms 1-5   232 - 346 SF	1,394

Religious Education Classrooms   Additional - 5	0	3,600
<del>Infant Room</del>	0	<del>900</del>
Religious Education Office - Existing	188   Office	188
Storage   Religious Education Office - Existing	98   Storage 6	98
Storage   Children's Education Programs	165   Storage 1,2,3 7, 8	Add. Storage Include in Classrooms
Restrooms   Children	140   RR 1, 2, 3 In Classrooms	300
Restrooms   Adult - Existing	275   Men's + Women's RR	275
Teen Lounge	0	600
<del>Indoor Play   Hang-Out Area(s)</del>	0	<del>1,000</del>
Outdoor Play   Hang-Out Area(s)	0	0
Mechanical - Existing	39   Mechanical	50
Circulation   20 %	430   Corridor	1,952
		9,613
<b>GALLERY   5th PRIORITY</b>	<b>Existing SF</b>	<b>Proposed SF</b>
Storage   Gallery	85   Storage 2	85
Gallery   Existing	745   Gallery	745
Gallery   Expansion	0	550
Kitchenette	71	71
Electrical Closet	44	44
Corridor	152	152
Restrooms	366   Men's + Women's RR	366
		2,013
<b>ADMINISTRATIVE   6th PRIORITY</b>		
Assistant Minister	0	100
Dir. R.E.	0	100
Reception   Waiting Area	0	80
Receptionist's Office   Area	0	100
Coffee Bar	0	50
Administrator's Office	242   Office 2	100
Membership Office   Small Conf Rm	0	100
Finance Office	0	100
Music Director's Office	229   Office 1	100
Minister's Study	257   Office 3	140
Sexton's Office	0	100

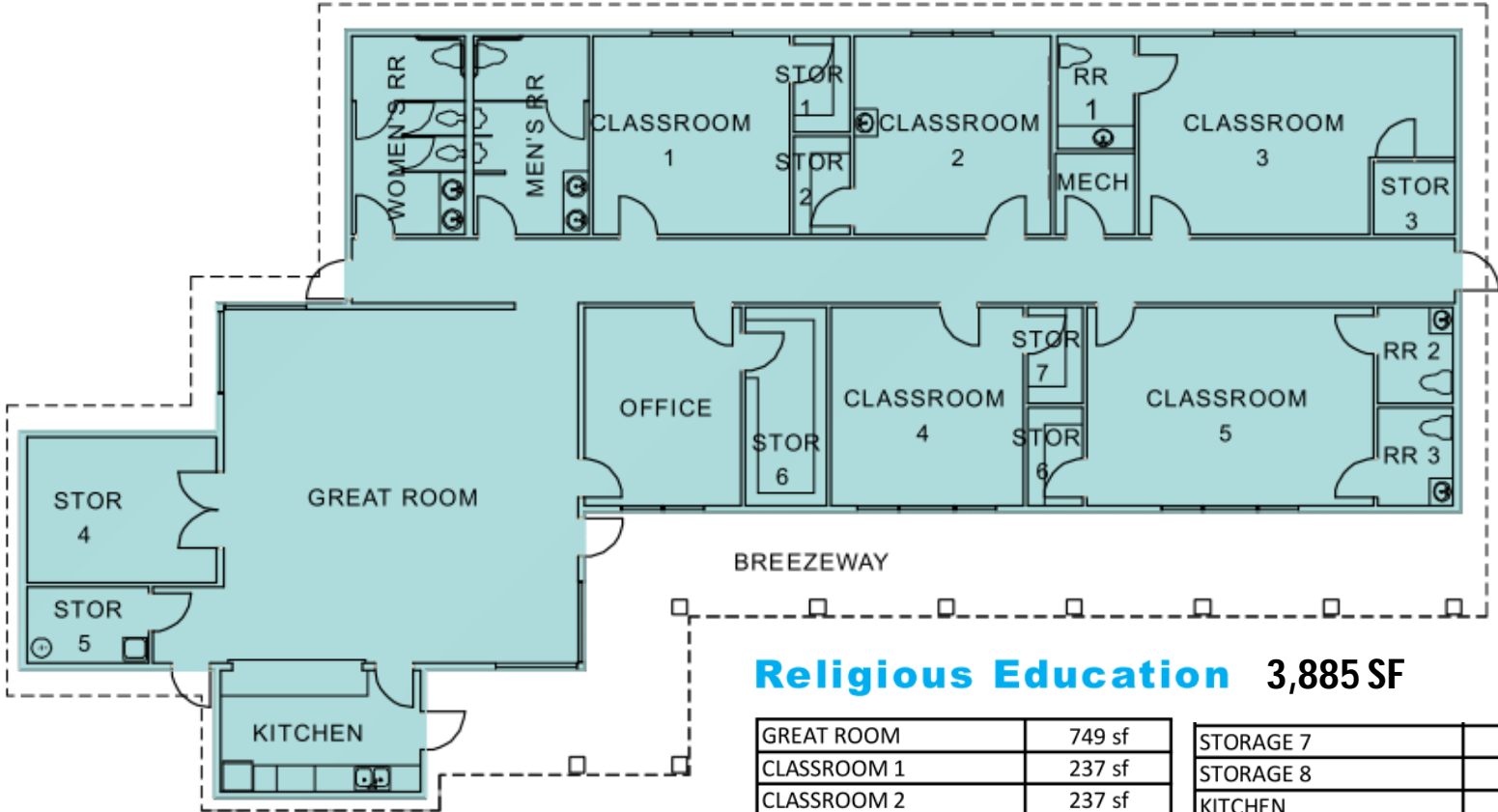
Volunteer Work Stations (2-3)	0	200
Storage   Church Archives	0	100
Conference Room	0	220
Library - Existing	576   Library ( Also Listed In Adult R.E.   Conf. Ctr.)	0
Copy   Workroom	0	100
Storage   Dedicated to Office Supply	0	100
Restroom	61   Restroom	150
Electrical Closet	0	50
Data Closet	0	
Custodial Closet	0	50
Storage   Banners + Flags	0	50
Storage   Hazardous Materials	0	50
Storage   Garden Tools	86   Storage	80
Maintenance Workshop	0	80
Circulation   15 %	0	345
		<b>2,645</b>

# EXISTING SPACE ANALYSIS



## Sanctuary | Gallery 3,427 SF

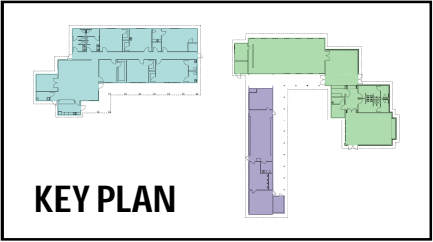
# EXISTING SPACE ANALYSIS



## Religious Education 3,885 SF

GREAT ROOM	749 sf
CLASSROOM 1	237 sf
CLASSROOM 2	237 sf
CLASSROOM 3	342 sf
CLASSROOM 4	232 sf
CLASSROOM 5	346 sf
STORAGE 1	32 sf
STORAGE 2	33 sf
STORAGE 3	35 sf
STORAGE 4	168 sf
STORAGE 5	92 sf
STORAGE 6	98 sf

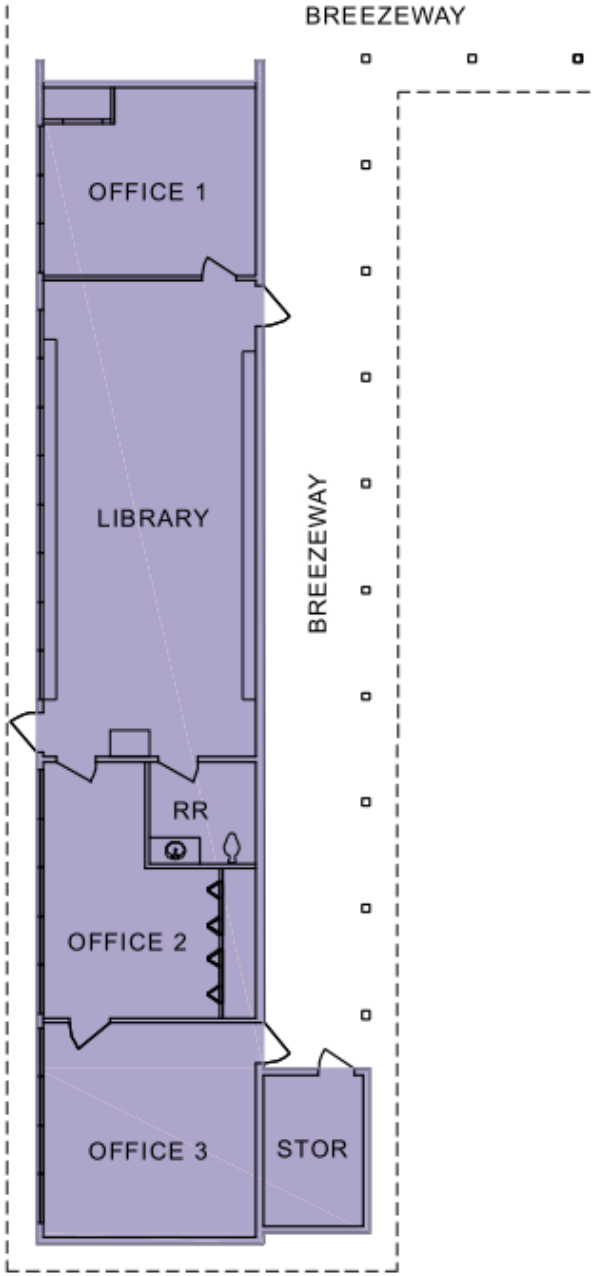
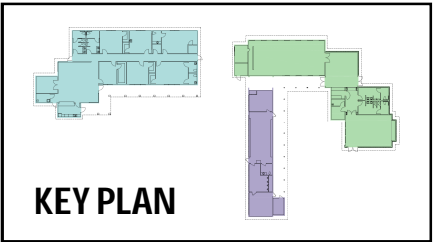
STORAGE 7	32 sf
STORAGE 8	33 sf
KITCHEN	147 sf
OFFICE	188 sf
WOMENS RESTROOM	136 sf
MENS RESTROOM	139 sf
RESTROOM 1	53 sf
RESTROOM 2	43 sf
RESTROOM 3	44 sf
MECHANICAL	39 sf
COORIDOR	430 sf
BREEZEWAY	773 sf



# EXISTING SPACE ANALYSIS

## Library | Admin 1,451 SF

LIBRARY	576 sf
OFFICE 1	229 sf
OFFICE 2	242 sf
OFFICE 3	257 sf
STORAGE	86 sf
RESTROOM	61 sf
BREEZEWAY	753 sf





# EXISTING SPACE ANALYSIS

8,763 TOTAL SF  
OF EXISTING SPACE